

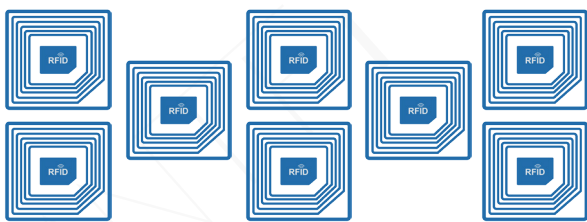
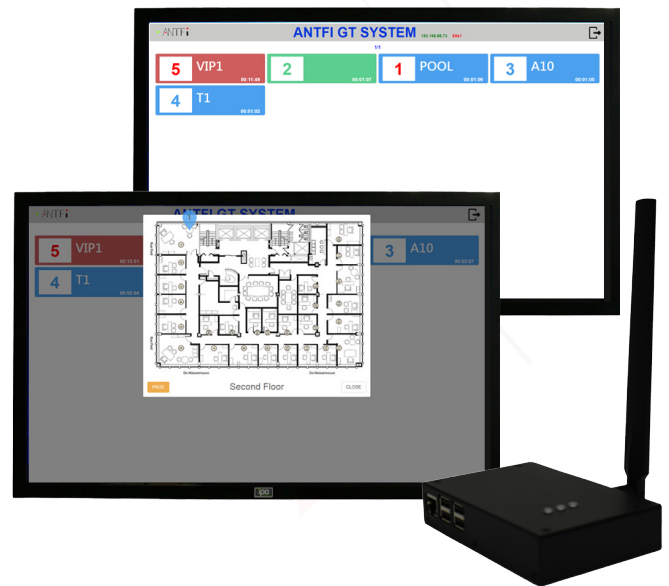


GP - 0 2 - T L (T R A N S C E I V E R)

Model	GP-02-TL (Transceiver)
Frequency	433.92MHz (Transmission)
Output Power	10mW
Power	DC 1.2V 850mAH, AAA Rechargeable Battery
Modulation	Frequency Modulation (FM)
Dimension	100mm x 16mm
Battery Life	Approx. 1.5 years
Weight	Approx. 100g (battery included)
Range of Distance	Approx. 50m (vary on weather/environment condition)

G L S - N D C - 0 1 H (C O N T R O L L E R)

Model	GLS-NDC-01H (Controller)
Service Mode	Track / Page Patrons
Power	AC 100-240V 12V 2A
Modulation	Frequency Modulation (FM)
Dimension	138mm 90mm 28mm
Weight	Approx. 490g
Coverage	Approx. 100m



(R F I D T A G) R F I D - 0 1

Model	RFID-01 (RFID Tag)
Service Mode	Passive
Dimension	50mm 50mm

M U L T I D E V I C E S S U P P O R T



Laptop



iPad



Display



Smart
Phone



Tablet



Desktop