

Quick Setup Guide Service Call System

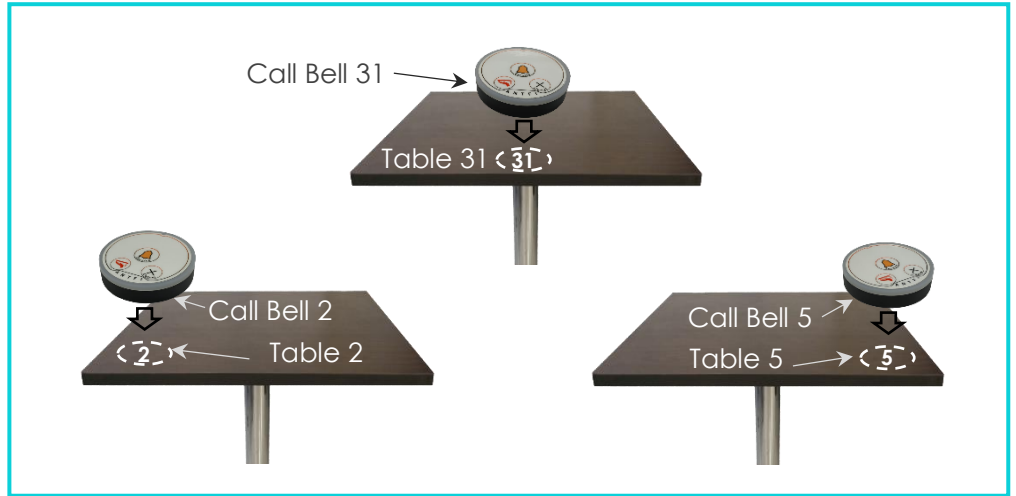
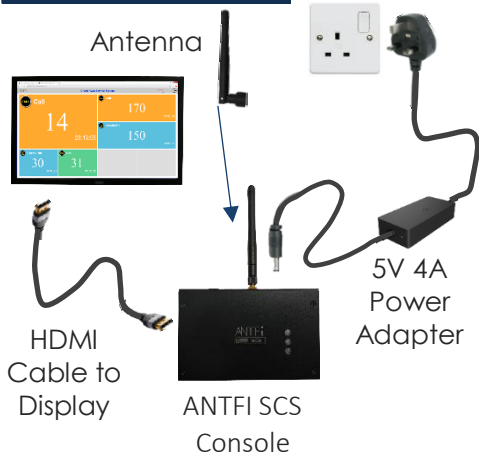


Components

- ANTFI Service Call System (SCS)
- SC-PT-03 Call Bell Transmitter
- SP-01Pro Belt Pager Receiver
- 5V 4A Power Adapter



Setup Guide



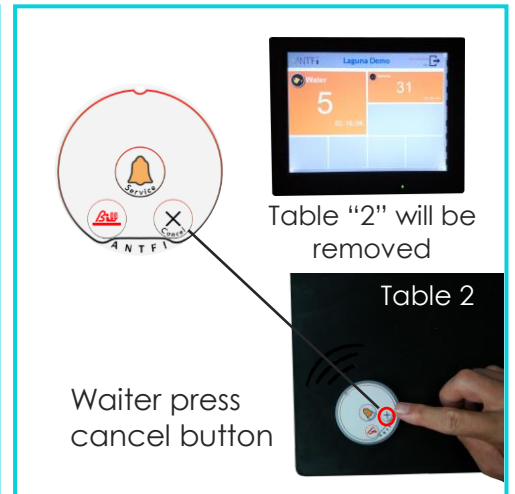
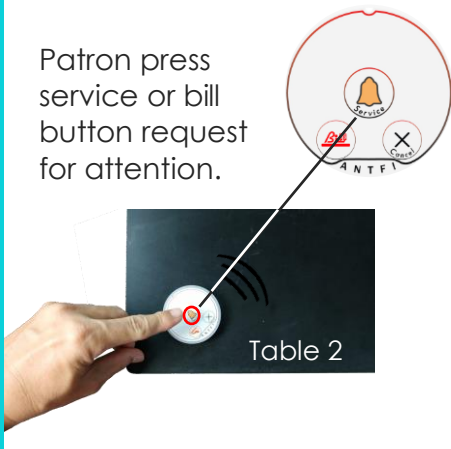
Step 1

Connect antenna to the SCS Console. Next connect SCS to your display using HDMI cable. Finally, plug the power adapter to the SCS and 3 pin plug into the electrical wall outlet.

Step 2

Identify a location on the table for the tablecall or call bell transmitter. Paste or Velcro the call bell transmitter onto the table according to the table number. Avoid stainless steel or metal table.
Notes: 1. The call bell transmitter can be customized with customer label. 2. There is an option for call bell cradle if require. 3. The call bell transmitter is waterproof.

Usage Guide



Step 1

Advise the patron to press service button for service when they are ready. Patron at Table "2" press service button to get waiter attention.

Step 2

Upon seeing the request, waitress will walk over to Table "2" to attend to the patron. The request will change from green to orange once the threshold time is reached.

Step 3

Once the waitress reached Table "2", press the Cancel button and the Table "2" request will automatically remove from the SCS display as shown above.